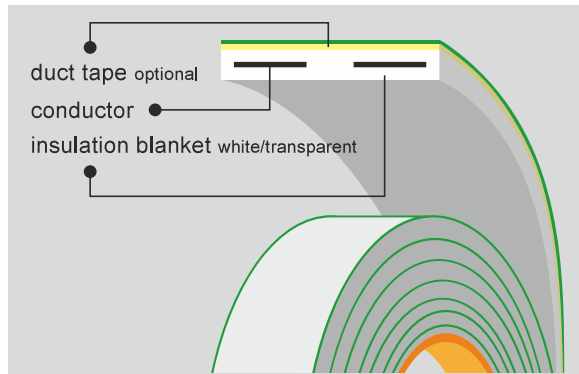


## LED-CONN LIMITLESS

LED-CONN LIMITLESS is an extremely thin flat conductor, which consists of tinned and laminated copper strips. This product was developed primarily for optimal installation and supply of LED installations. Length, cable laying through tight passages and LED-profiles have no limits. It is possible to expose contact points in previously defined intervals. Connections can be made here with e.g. LED connectors offered by us. LED-CONN LIMITLESS is available with white or transparent insulation, with or without adhesive tape (3M™- Quality) on the backside.



### Package:

- Sold by the meter on a roll

### Advantages:

- Tool-free installation with connectors
- alternatively solderable
- Very flat profile for inconspicuous and exact installation
- Foldable, flexible and resistant



### Dimensions

Conductors	2	4
Width of cable	8 mm	
Insulation thickness	0,1 mm	
Width of edge	0,45 mm	
Contact points every	100 mm	
Pitch	3,8 mm	1,9 mm
Width of conductor	3,3 mm	1,4 mm
Thickness of conductor	0,1 mm	
Cross section	0,33 mm <sup>2</sup>	0,14 mm <sup>2</sup>
Thickness of cable	0,3 mm	
Current load*	6 A	2 A

\*see. VDE0891-1

### Color of insulation:

- brilliant white
- concrete transparent

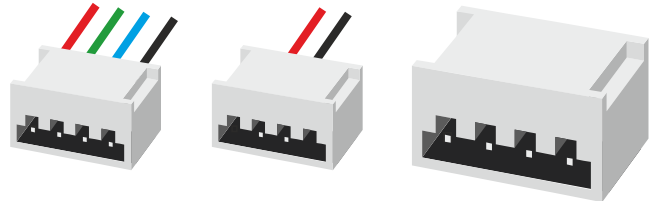
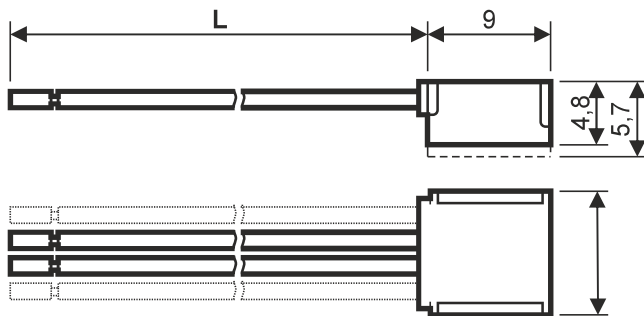
### Characteristics, approvals, approbations

- Rated voltage 25 V
- Insulation resistance min. 10 GΩ/km
- Operating Temperature -40°C bis +105°C
- Flammability acc. to DIN 75200 SE =self extinguishing
- behaviour u. flame app. acc. to EN DIN 13501-6:2019-05 Eca
- RoHS/REACH-compliant

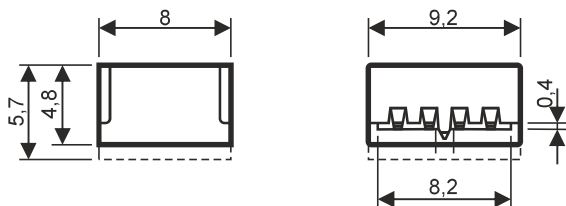


## LED-CONN ACCESSOIRES

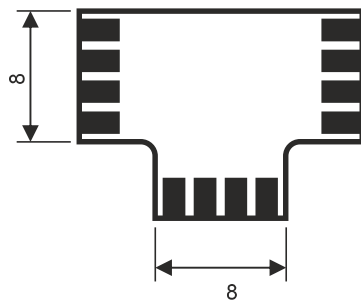
1. Infeed (round to flat)
2. Picker (flat to round)



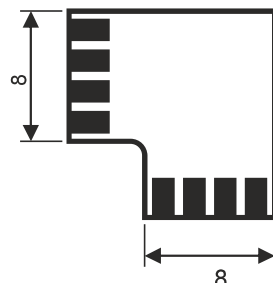
3. Connector Strip - Strip (flat to flat)



4. T-Connector  
Use LED-CONN as a busbar



5. L-Connector  
Corner connection 90°



### Technical specifications

Volatge	< 25 V
Max. total current per connector, depending on LED circuit board	10 A
current capacity, max. per pin	
2-pole:	5 A
4-pole:	5 A / 1,67 A
Ambient temperature, operation	-30 bis +70°C
Based on	IEC 60838-2-2
Cross section	AWG 22
Insulation material	PBT GF
Inflammability class acc. to UI94:	V0

